



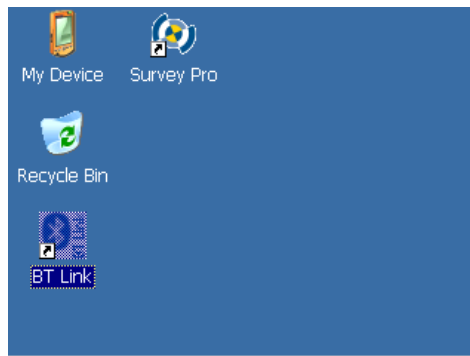
TcpTUNNEL

Spectra Geospatial® FOCUS® 35

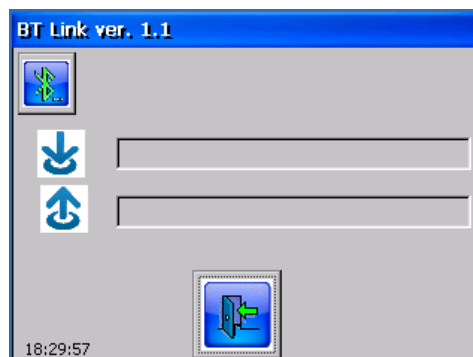
Communication Settings

In order to connect **TcpTunnel** with **Spectra Geospatial® FOCUS® 35** total station, the next steps must be followed:

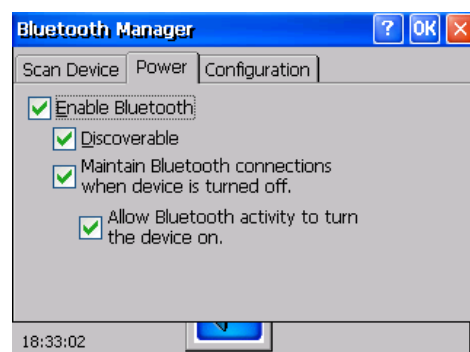
- Turn on the total station.



- Run **BT Link** program

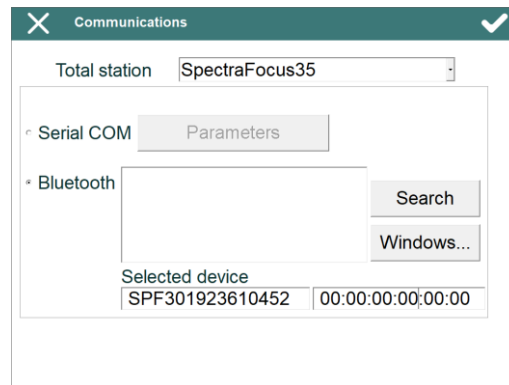



- The first time **BT Link** is executed, it must be checked if its configuration is correct. To do this, click Bluetooth button, select **Power** tab and check that all options are activated. Then, click OK button.

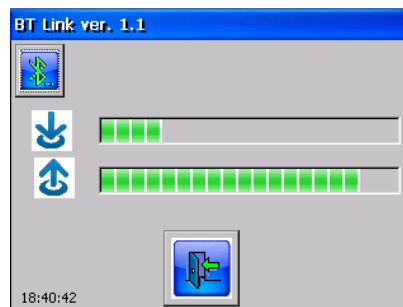


- Run **TcpTunnel TS**.


- Go to **Settings > Communications**. The first time the program is run, this screen will be shown.



- Select **SpectraFocus35** in **Total station** list.
- Select **Bluetooth** and click **Search** button to start the device discovery. If the total station is already paired with the Windows device, **Windows...** button can be clicked to select it directly.
- Select the total station from the **Bluetooth** list. Then, the **Selected device** edit boxes will be filled with the Bluetooth friendly name and address of the total station.
- Click  button to start the connection with the total station.
- After connecting with the total station, **BT Link** should show data traffic in the following way, and instrument settings screen will be shown in **TcpTunnel**:



Total Station Settings

After connecting with the total station, some of its parameters can be configured from **TcpTunnel**. This can be done from **Settings > Instrument** option, from the main menu, or clicking  button, within surveying and staking out options.

This screen shows the following information:

Target type: It allows one to change the target type. The available options are **Prism**, **PrismAdvanced** and **DirectReflect**. This one is used to measure without prism. To change the selected target, click **Set** button.

Laser pointer: This option enables or disables the laser pointer when **DirectReflect** target is selected.

Autolock: This option is only available for **PrismAdvanced** target and enables the autolock function in the total station. To define the search window, horizontal (**H**) and vertical (**V**) angles, in grads (**gon**) or degrees (**deg**), must be entered.

Height (m): It defines the prism height, in **meters**.

Prism (mm): It allows one to set up the prism constant, in **millimeters**.

Enable compensator: It enables or disables the total station compensator.

Change face: It allows one to turn the total station to opposite angles.

Measure: Measures a point showing the current horizontal and vertical angles and slope distance.

Search: This option is only available for **PrismAdvanced** target and tries to find the prism within the given window.

Below these options, the program has a status bar which shows the total station model and serial number or the information about the command which is being executed, for example, **Searching...**, **Changing compensator...**, etc.