

TcpTUNNEL

6

Installation Guide

Índice

1. SYSTEM REQUIREMENTS	3
2. PROGRAM INSTALLATION.....	4
3. LICENSE ACTIVATION	6

1. System requirements

The minimum system requirements for running **TcpTunnel** are:

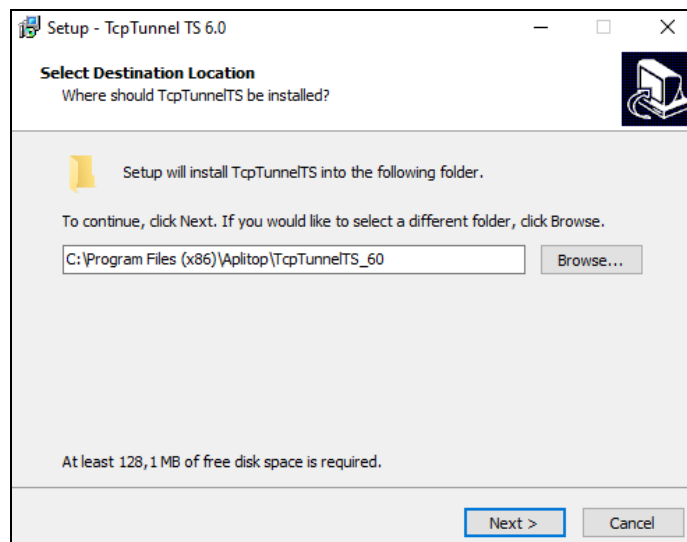
Processor	x86
Operating system	Windows 7, 8, 8.1 or 10 (32 or 64 bits)
RAM memory	4 GB
Conectivity	Bluetooth
Screen resolution (*)	SXGA (1280x1024) with text scale 100%

(*) The recommended screen resolution is **Full HD (1920x1080)**, with text scale **100%**. With this screen resolution, it's possible to configure this parameter with the values **125%** and **150%**.

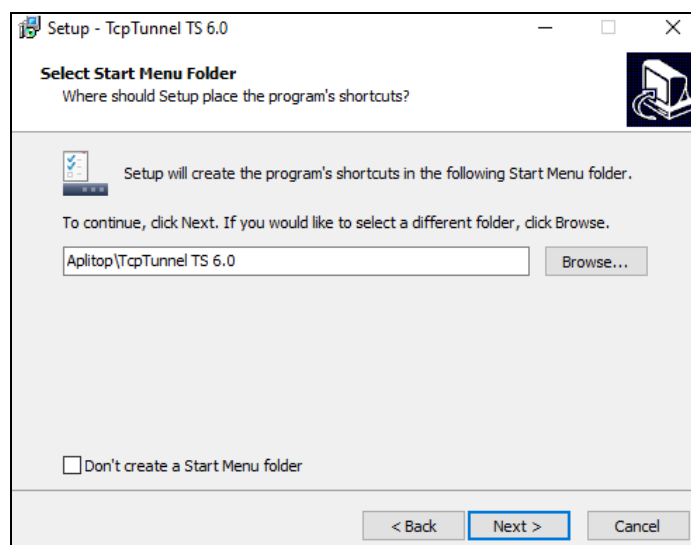
2. Program installation

To install **TcpTunnel** on the device, the next steps must be followed:

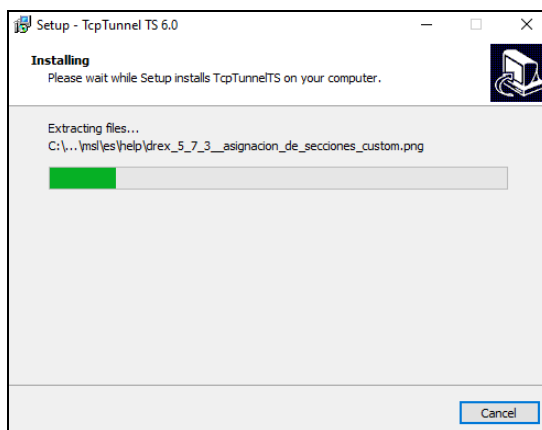
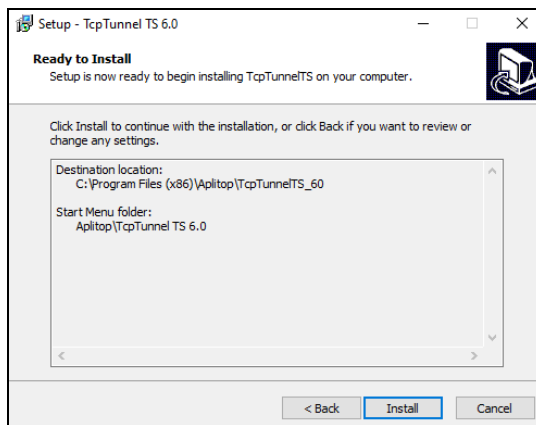
- Extract the zip file containing the executable program. The name of this file has the format **<date>_tcptunnelts_<version>.zip**.
- Run the installation file.
- Select the language. The available options are english and spanish. Then, click **OK** button.
- Select the installation folder and click **Next** button.



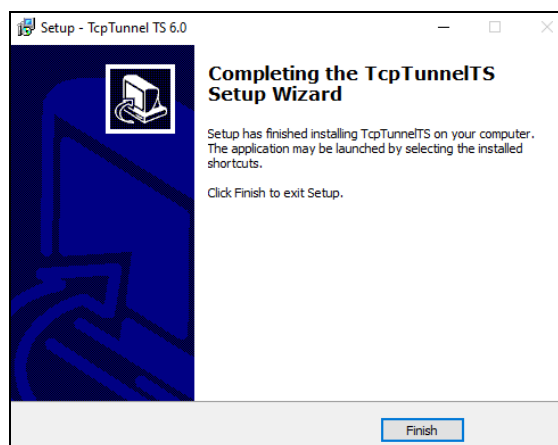
- Select the Windows Start Menu folder and click **Next** button.



- Click **Install** button.



- After finishing the installation of **TcpTunnel**, some additional components will be installed to allow total station drivers work properly. In general, leave
- Click **Finish** button once the installation of all the components is finished.



- A shortcut to the program will be created in **Aplitop** folder, within Windows Start Menu, and on the desktop.

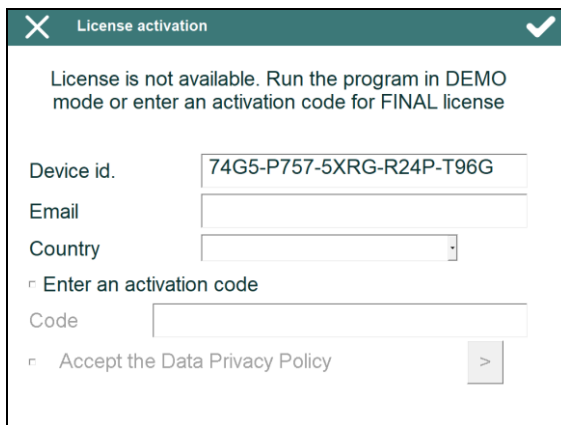
3. License activation

To activate the license for **TcpTunnel** and some additional components, it will be necessary Internet connection during the first execution of the program and the configuration of communications with the selected total station.

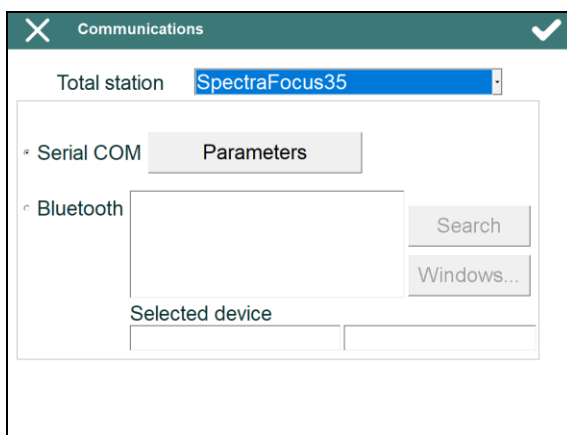
There are 3 types of license, **DEMO** (30 days), **FINAL** (permanent), **365** (annual). For these last two licenses, it will be necessary to enter an activation code of 20 and 16 characters, respectively.

The next steps must be followed:

- Run **TcpTunnel**.
- Enter the Email, the Country and enable the check box *Accept the Data Privacy Policy*.



- For **FINAL** o **365** license, enable the option *Enter an activation code* and write, on *Code* edit box, the activation code supplied.
- Click OK button to start the activation process.
- Select the brand and model of the total station.



- Set up the connection mode, *Serial COM* or *Bluetooth*, and the communication parameters.
- Click ok button or, otherwise, the license of the total station driver won't activate.
- After connecting the program with the total station, it will be ready for further executions. Since then, no Internet connection will be necessary.