



Technical Note

(TcpMDT_en_v75_utl006_Import Topcon Magnet)

Surveys import from Topcon Magnet Field in MDT

Date update

06/04/2017

Requirements

MDT versions: 7.5 or higher

CAD versions: All supported

Operating system: Windows 7/8/10

You must also have installed version 7.5.18 or higher of the LandXML import and export module, which can be checked in **MDT7> About TcpMDT**.

Thanks

We appreciate the advices given to Héctor Rodríguez, Mikel Otaola and Juan Manuel Villegas, Topcon Spain support technicians.

Objective

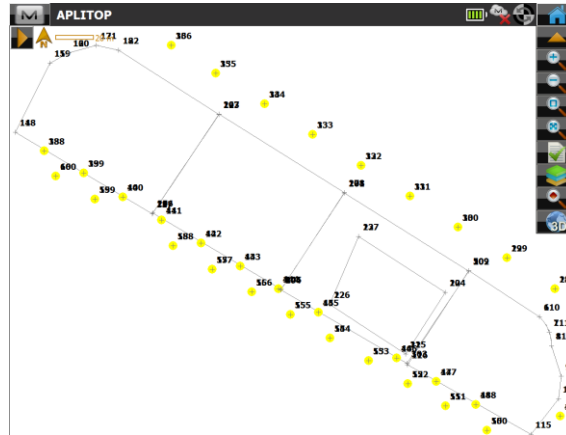
This Technical Note describes the procedure for converting a survey made with Topcon's Magnet Field, in order to import points and break lines are imported into MDT. To do this the following steps must be followed:

Export of surveys in Magnet Field

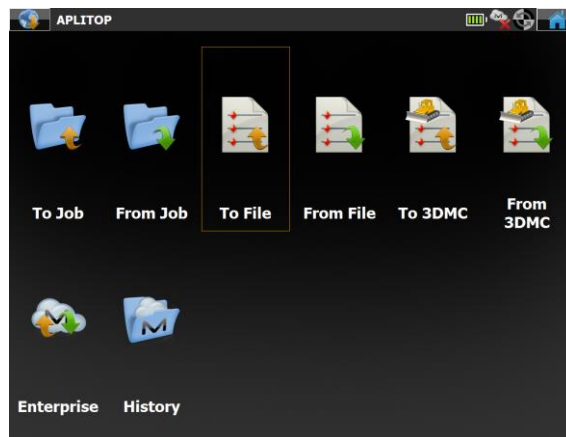
Import of surveys in MDT

Export of survey in Magnet Field

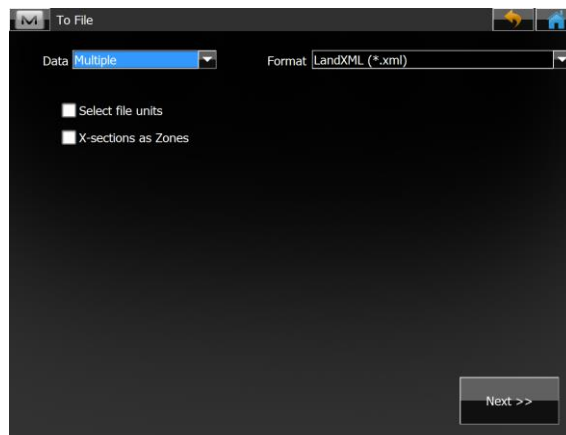
1. Start application, and open the desired project



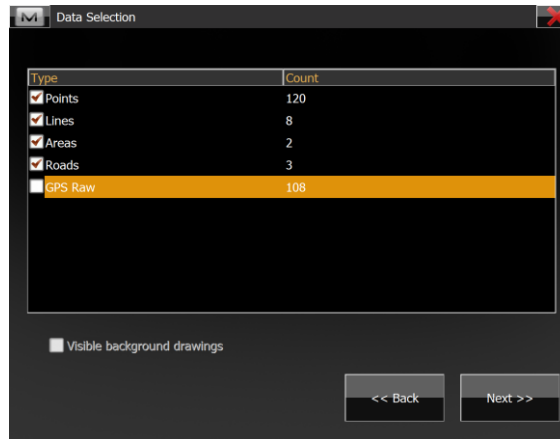
2. Log in to **Exchange > File**



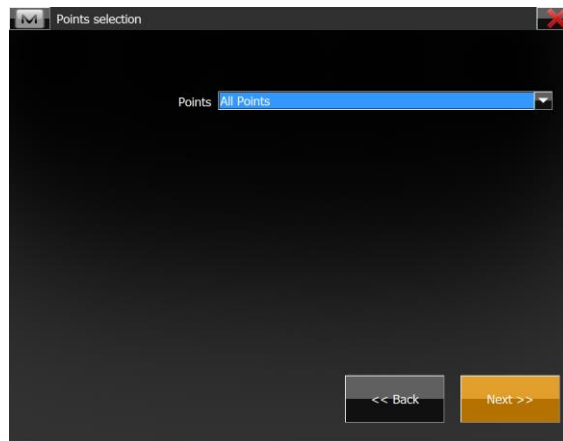
3. Select the format **LandXML** and press **Next** button.



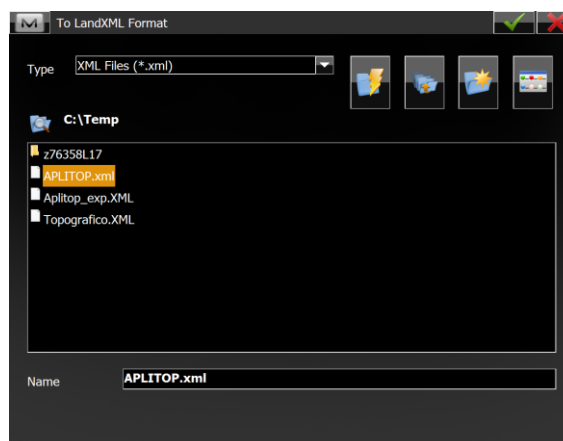
4. Now activate the boxes **Points**, **Lines** and **Areas** and click **Next** button.



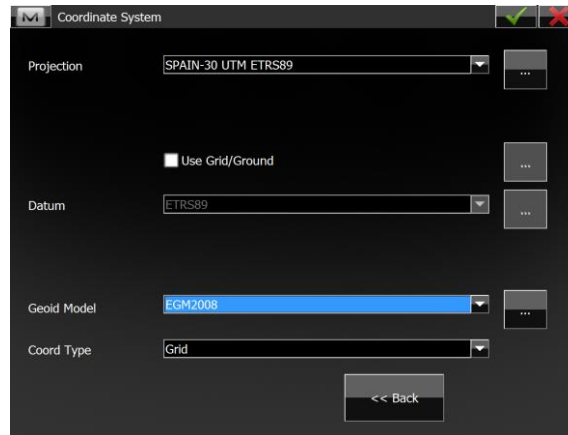
- Having marked the points, Magnet Field asks us which ones we want to export. Choose **All Points** option and click to the **Next** button.



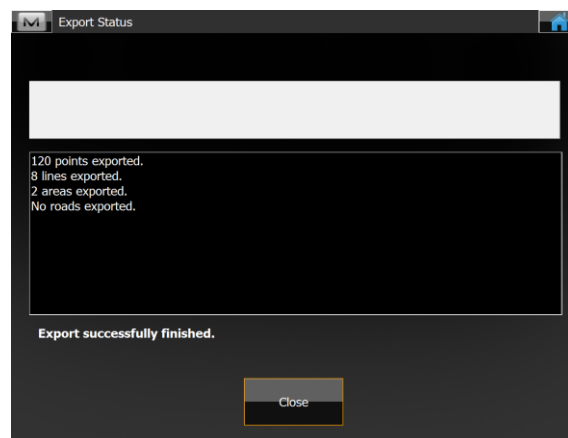
- Now specify the file name to export (*in our case Aplitop.XML*) and click **Next** again.



- In following, specify the coordinate system to be used in the export, cross the box **Use Plane / Grid** and validate the dialog.

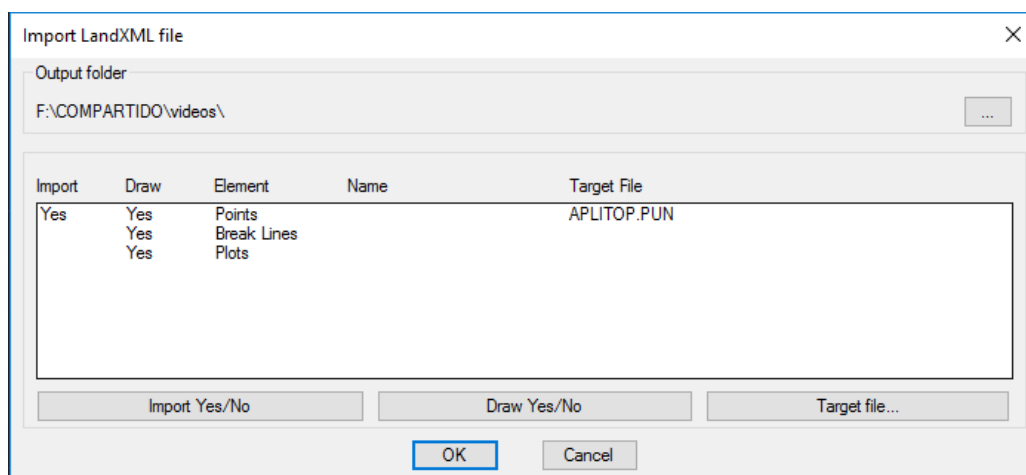


- The export must be done successfully, indicating the number of points, lines and areas exported. Press **Close** button.



Importing the Survey in MDT

- Run the command **MDT Utilities > Import from LandXML**, and choose the file created previously *Aplitop.XML*.
- Then, a dialog will be displayed with the information that has been interpreted. In our case, they will be: **Points, Break Lines** and **Parcels**. Press **OK**.



3. All points will be imported, and the break lines will be drawn automatically in their respective layers.

References

[Video](#)

[Export from MDT to Topcon Magnet Field](#)