



Technical Note

(TcpMDT_en_v75_sys001_ChangeUTMZone)

Changing the UTM time zone

Date of Update:

24/08/2015

Requirements

MDT: **7.0 or higher with Topography model**

CAD: **AutoCAD / BricsCAD / ZWCAD**

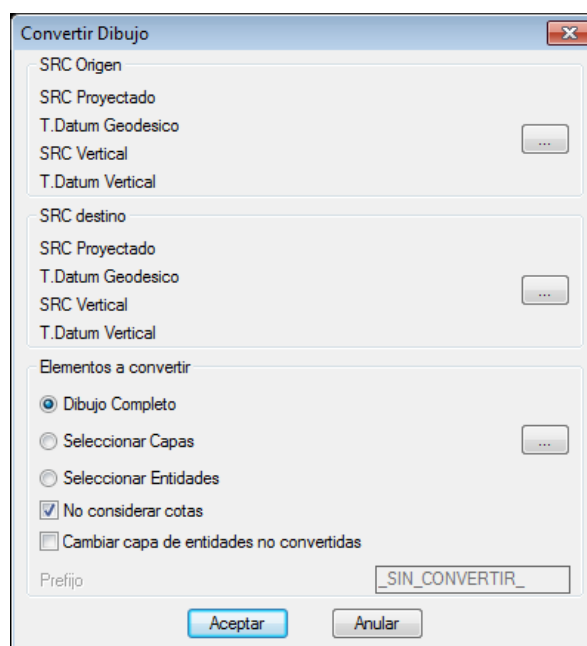
Operating System: **Windows XP / Vista / 7 / 8 / 8.1 / 10**

Purpose

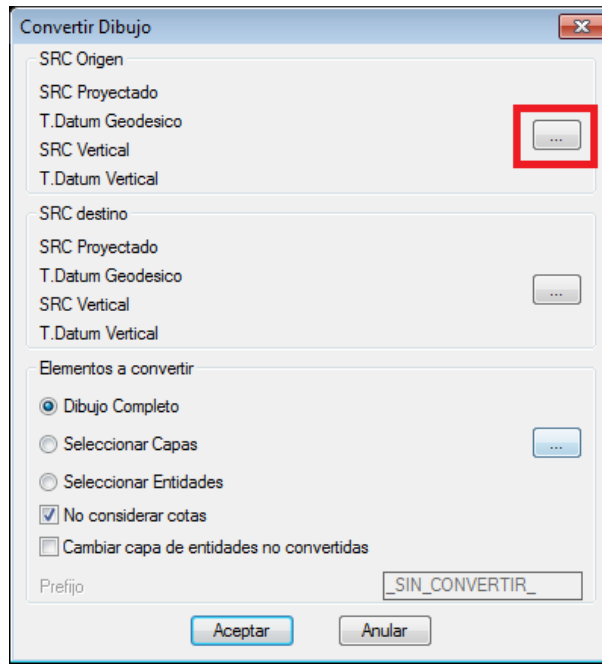
Changing the UTM time zone of a drawing, implementing the corresponding change to all the vertices of all the entities (points, lines, polylines, arcs, texts, etc.), enabling us to control whether we keep the original height or not.

Details

- Execute the **MDT > Coordinate System > Convert Drawing** command.



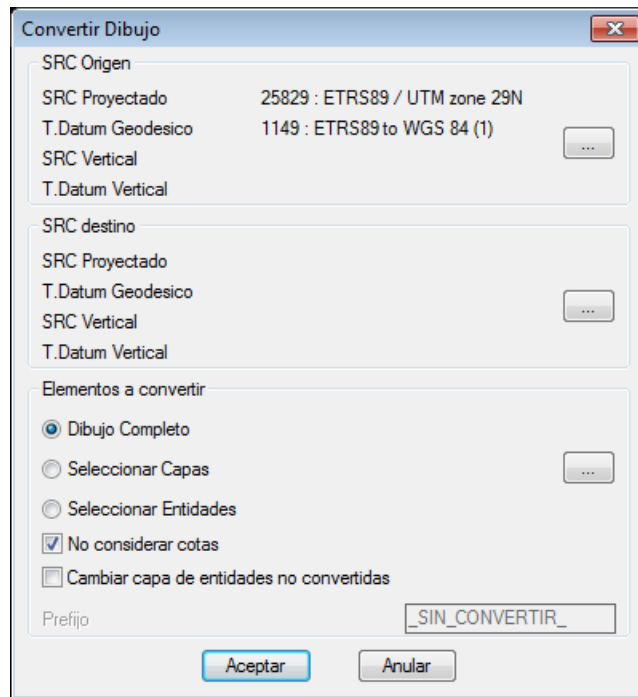
- Select the coordinate system of the current drawing under the **CRS Source** section.



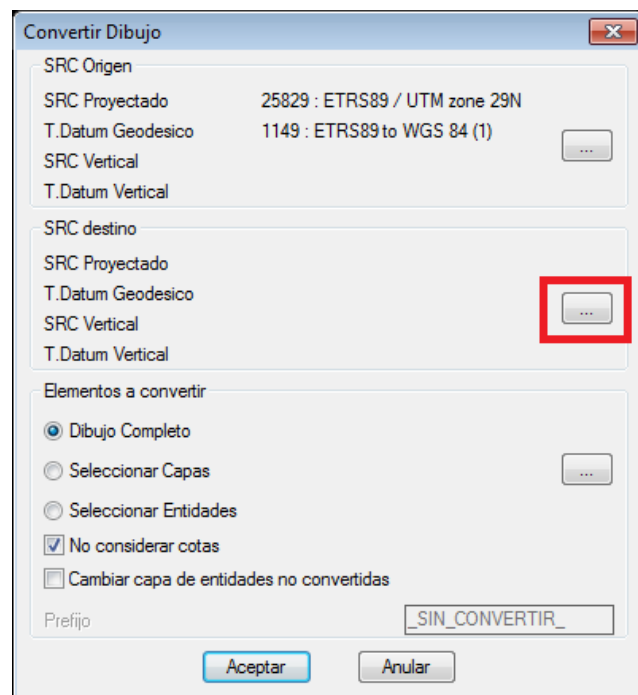
- Click on the **Area** box and select the country.
- Select the coordinate system of the current drawing from the **Favourites** list. If the list is empty, define the **Planned CRS** and change the geodesic datum manually. Alternatively, we can define the geoid, which corresponds to the **Vertical CRS** and **Vertical T. Data** sections. In this case, the drawing coordinates are in datum ETRS89 and in the UTM 29 North time zone.



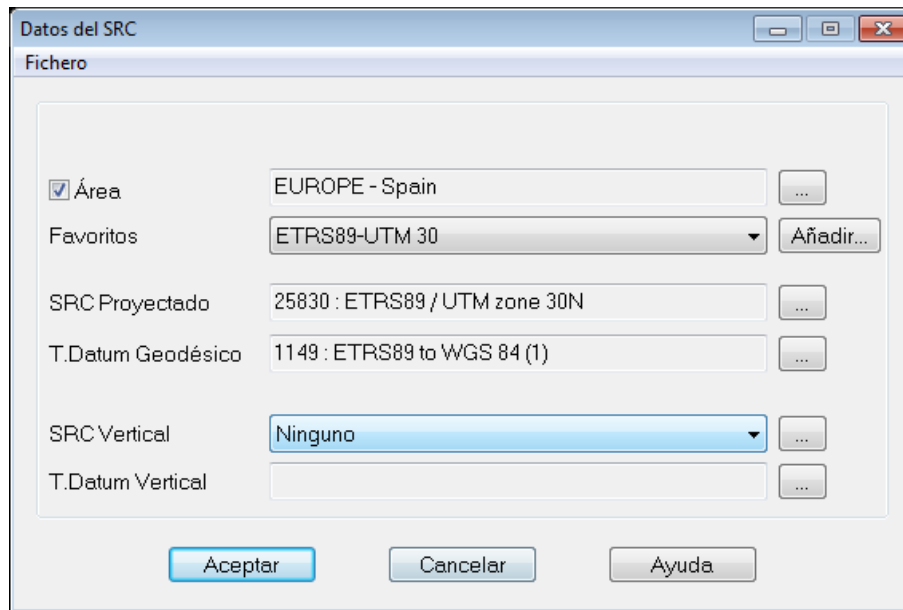
- Click on the **Accept** Tab.



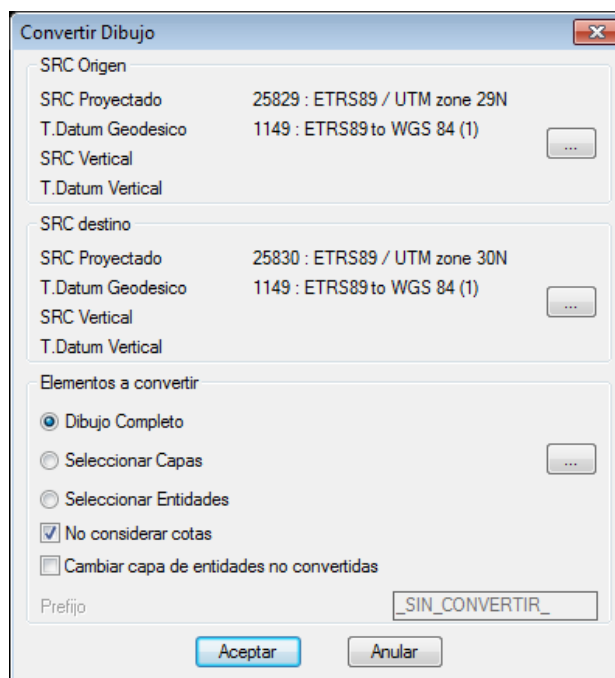
- Click on the **CRS Destination** tab to define the coordinate system to which the drawing is to be converted.



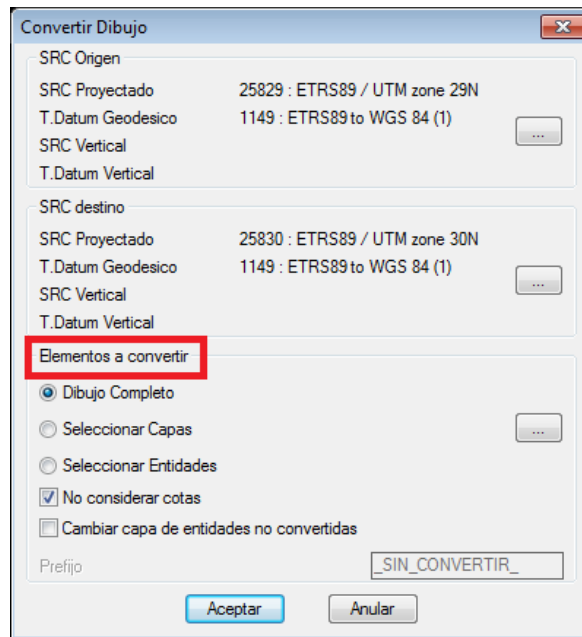
- As with the source, select the coordinate system of the current drawing from the **Favourites** list or define it manually. In this case, only the system's time zone is changed, from 29 to 30, and the datum is left the same.



- Click on the *Accept* Tab.



- Select the elements in the drawing you wish to convert in the section with the same name.



- Click on the **Accept** Tab. In this case all the entities in the drawing will be converted from UTM time zone 29 to 30.