



Technical Note

(TcpMDT_en_v75_img001_GeoreferenceGoogleImage)

Georeferencing Google Earth Images

Date of Update:

22/09/2015

Requirements

MDT: 6 or higher

Purpose

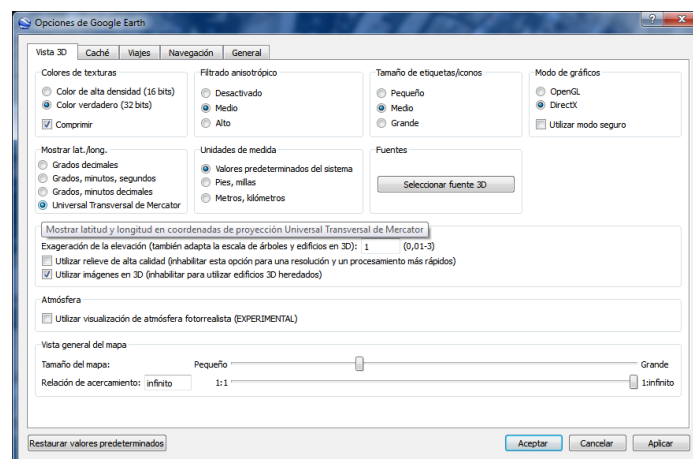
To georeference an image imported from Google Earth. This technical note assumes the destination at which the image is to be inserted will be in **WGS84** in accordance with the source.

In any case, the user should read the Google Earth licensing agreement and the restrictions of use at <http://earth.google.com/intl/es/license.html>.

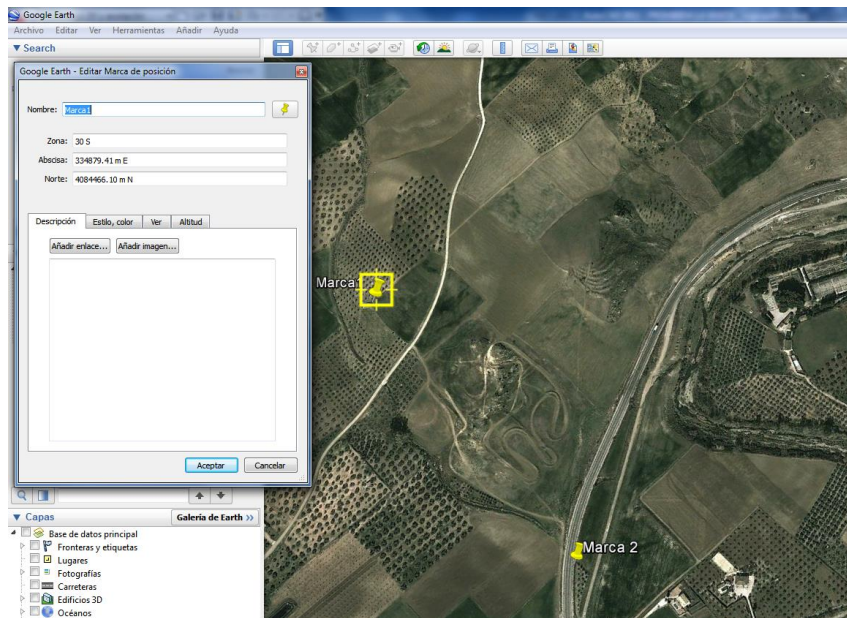
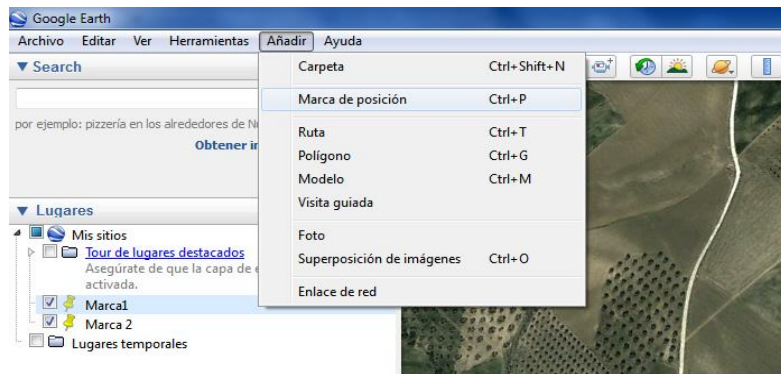
Details

The procedure comprises the following steps:

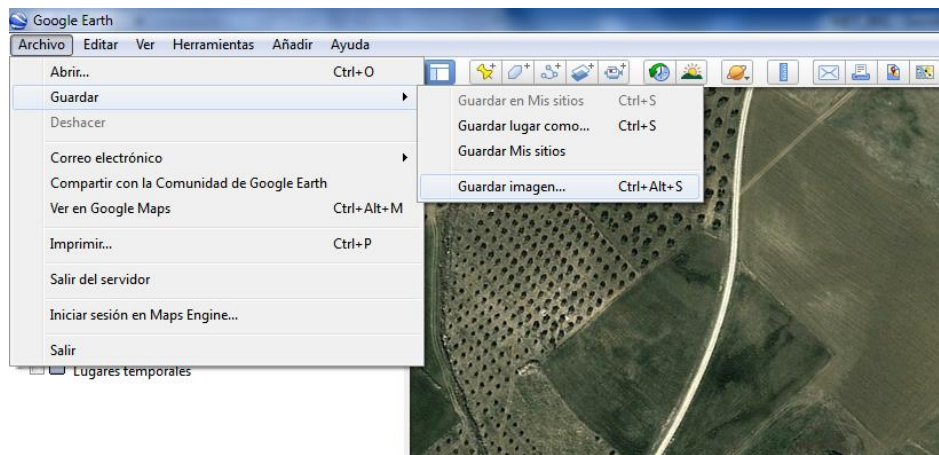
1. **Google Earth > Tools > Options > 3D View tab**, select “**Universal Transverse Mercator**”



2. Insert two markers at the ends of the image of interest and make a note of the coordinates of each one.

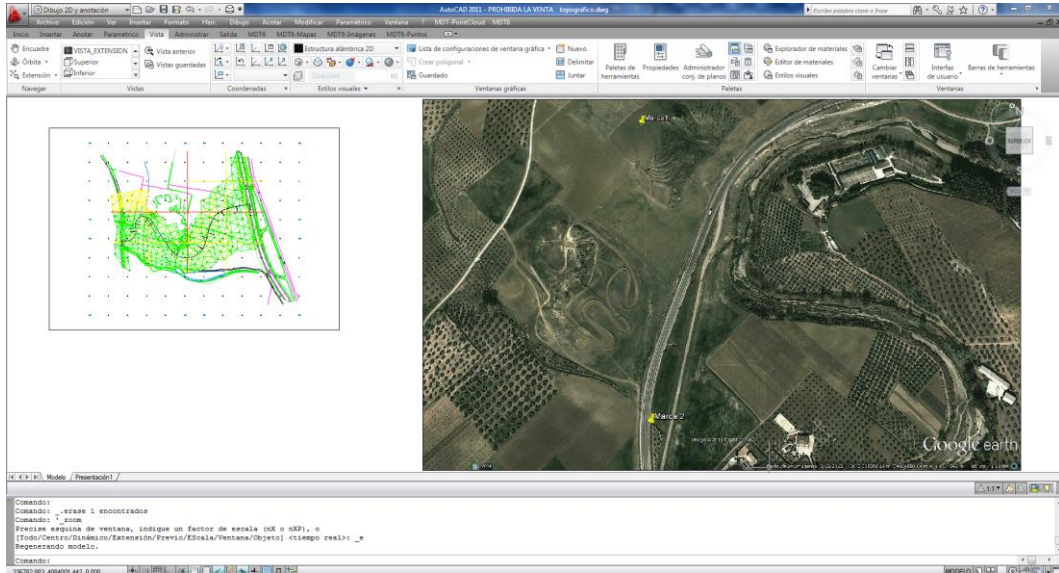


3. Execute **File > Save > Save image**



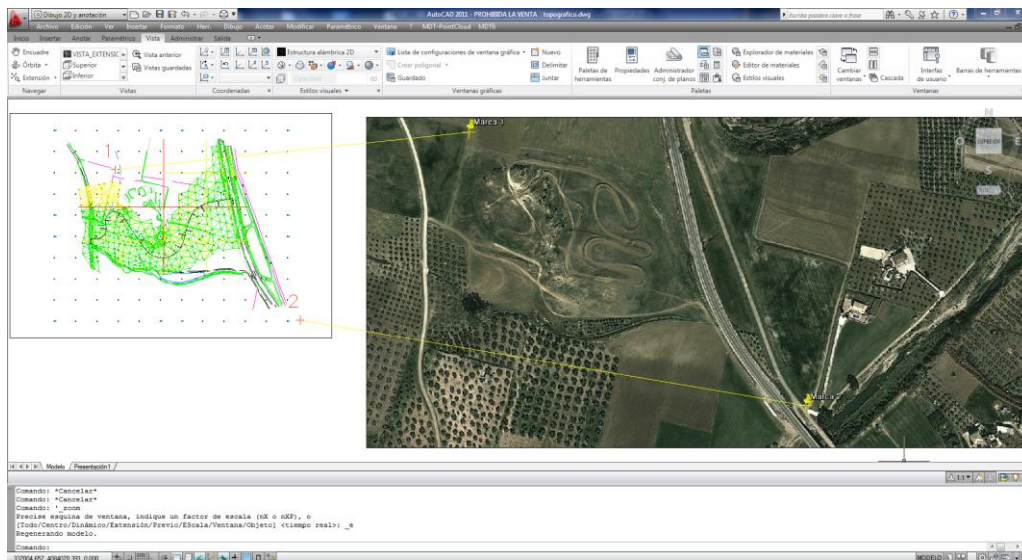
4. In AutoCAD, under **MDT > Points > Insert**, add a pair of points and note down the coordinates.

5. In **AutoCAD**, under **MDT > Images > Insert Images**, add the image in any position.



6. Execute the command **MDT > Images > Markers > Create Markers**, and indicate the markers on the image as source points.

7. Execute **MDT > Images > Marks > Link Markers to Points** to join the markers on the image with the points inserted, and create pairs of source and destination points.



8. Execute **MDT > Images > Georeference Image**, A dialog box appears with the results of the transformation, with two points, we can only execute a **HELMERT**, in order to execute an **AFIN** we would need a minimum of 3 pairs of points.

